

**DECKING SOLUTIONS,  
WE'LL BRING THE  
How To.**



# **COMPOSITE DECKING**

FLOORING | SCREENING | DECKING TILES



# COMPOSITE DECKING

LOW MAINTENANCE,

## WHAT IS COMPOSITE DECKING?

Stratco Composite Decking is made from a combination of recycled timber powders and high density polyethylene (HDPE) with necessary additives to provide UV stabilisation, mould resistance, binding and colour. Stratco Composite Decking offers a low maintenance option while still giving the appearance of natural timber.

## APPEARANCE

Unlike some other composite decking products, the biggest material component in Stratco Composite Decking is recycled timber powders. This means not only is Stratco Composite Decking environmentally friendly but it also looks and feels like hardwood providing a genuine timber look to your low maintenance deck. Allow 3-6 months for your Stratco Composite Decking to reach its final weathered colour.

## WEATHER RESISTANCE

Traditional timber decks often twist and splinter after only a few years in the harsh Australian conditions. Stratco Composite Decking will not splinter or twist and contains UV stabilisation to prevent premature fading in sunlight.

## BOARD DETAILS

### MOULD, MILDEW AND TERMITE RESISTANCE

Additives included in the manufacture of Stratco Composite Decking ensure it resists moisture penetration and resists termites. These are key benefits that timber cannot provide.

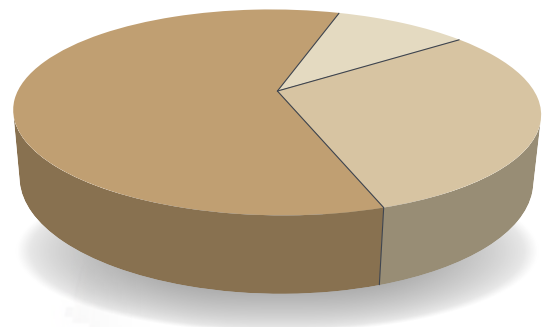
## COMPOSITE DECKING FEATURES

- Made from recycled timber powders
- Looks & feels like hardwood decking
- Mould, mildew & termite resistant
- Weather resistant
- Low maintenance - no oiling or painting required
- Concealed fixing clips ensure a clean, fixing free finish
- Easy to install - no need to pre-drill decking boards



## MATERIAL COMPOSITION

■ Recycled Timber/Bamboo Powder ■ Recycled HDPE ■ Additives



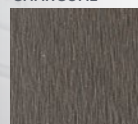
*"Concealed clips make install easy"*



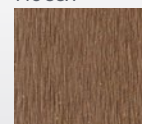
## COLOURS AND FINISHES

	Finish		Width (mm)	Height (mm)	Length (mm)
	Top Side	Under Side			
Charcoal	Smooth	Ribbed	140	25	5400
Mocca	Smooth	Ribbed	140	25	5400
Forest Red	Wood Grain	Ribbed	140	25	5400

CHARCOAL



MOCCA



FOREST RED



### INSTALLATION - CONCEALED FIXING

Stratco Composite Decking's concealed fixing clip system ensures a clean, fixing free surface finish that eliminates the need for pre-drilling the decking boards when installing your deck. This will significantly reduce your installation time.

24 Concealed Fix Clips (code: TI-1467) are required per square metre for 140mm Stratco Composite Decking based on a standard deck with 450mm joist spacing.

The following decking screws are recommended when installing your Stratco Composite Decking. The heads to these screws are black powder coated resulting in a clean, neat, 'screw less' appearance.

**TIMBER FRAME:** 7G x 55mm Type 17 Black Head Screw (HW-20017)

**STEEL FRAME:** 7G x 42mm Torx Black Head Screw (HW-20016)

### TOOLS REQUIRED

Standard wood working tools are required for installing the Stratco Composite Decking (eg. mitre saw, cordless drill/driver).

### SPECIFICATIONS

Maximum joist spacing - laid at 90° to the joist	450mm
Minimum spacing between boards (side by side)	5mm*
Minimum from board running parallel to side wall	5mm
Minimum spacing required for butt joints	5mm
Maximum length of breaker boards	300mm
Minimum ground clearance	300mm
Fall away from structure for water runoff (per metre)	3mm

\*The concealed fixing clip ensures the minimum 5mm spacing.

### CARE AND MAINTENANCE

Please ensure manufacturer's instructions are followed when using any cleaning product on your Stratco Composite Decking. Although Stratco Composite Decking is a low maintenance product, periodic cleaning will ensure your deck looks great all year round. Regular sweeping of your Stratco Composite decking is recommended. 'Sugar Soap' solutions will assist in removing most dirt and grime.

**WATERMARKS:** As with all timber based decking materials some water stain marks may appear on the Stratco Composite decking boards. If water is left to pool for extended periods this could result in water stain marks. Dripping water or condensation can also cause water marks. With the lighter colour boards, water marks will be more predominant than the darker colours. These will generally disappear with further exposure to the elements and general weathering, however you can wash the deck with hot water to assist in removing marks, scrubbing with a soft bristle broom or alternatively use an application of diluted 'Intergrain Reviva' can also assist. A light sanding of affected boards can also remove water stain marks.

**SCUFFS & SCRATCHES:** Scuffs and scratches can occur. These will generally disappear with further exposure to the elements and general weathering. A light sanding of the affected area will help remove scuffs and scratches; further exposure to the elements and general weathering will fade any resultant sanding marks. Only sand along the grain and care should be taken to prevent over sanding as this will result in unsightly areas.

**OILING & PAINTING:** Stratco Composite Decking does not require oiling or painting. It is not recommended to use oil or paint on Stratco Composite Decking as this may result in peeling and cracking of the composite material. Simply cleaning at regular intervals will maintain the appearance.

### FIXING RECOMMENDATIONS

Stratco Composite Decking concealed fixing clips and screws are recommended for installation of Stratco Composite Decking. Chemshield or Stainless Steel decking screws can be used, however the screw heads will be visible; negating the value of the concealed fixing appearance.

Note: Nails are not to be used for installing Stratco Composite Decking.

Stratco Composite Decking expands in heat and sun - to avoid building stress into your deck and having possible lengthways shrinkage, it is best to fix your decking boards when the boards have not been sitting in full sun and the ambient temperature is less than 25°C.

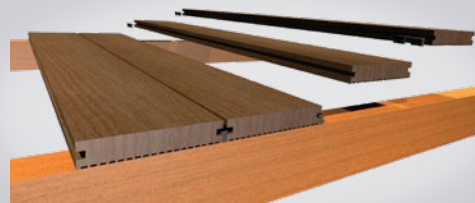
### FLOOR LAYING PROCEDURE

#### TIMBER FRAME

To fix the outer edge of the starting board, screw through the face of the board at every second joist. Pre-drilling is recommended when screwing directly into the face of the board to reduce the risk of splitting. If preferred, the outer edge groove can be sawn off prior to installation to provide a square edge.

#### STEEL FRAME

Screw fixing directly through the board is not recommended for steel joists. Fix a right angle bracket to the joist, then screw up through the bracket into the underside of the decking board. If preferred, the outer edge groove can be sawn off prior to installation to provide a square edge.



### TYPES OF FIXING



7G x 42mm  
Metal self drilling  
Torx Black Head Screw



7G x 55mm  
Timber self drilling  
Type 17 Black Head Screw

### SAFETY AND COMPLIANCE

Stratco composite decking is not to be used as a structural or load bearing product nor is it to be used in any situation that will cause stress to the product for example safety balustrading. Installation must be done in accordance to the Stratco installation guide and fixed down to a solid, secure and properly constructed frame or base.

# COMPOSITE DECKING



**PATIO CENTRAL**

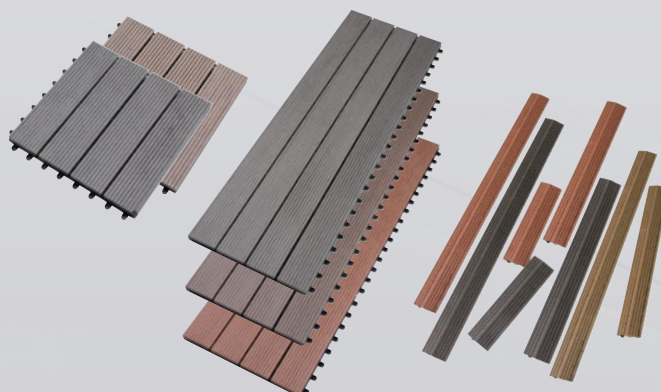
## COMPOSITE DECKING RANGE

Decking boards are available in a range of sizes.



## ALTERNATIVE DECKING OPTIONS

Decking tiles are also available in a range of sizes.



### COMPOSITE DECKING RANGE

Code	Item	Size	Colour
TI-1587	Decking	90 x 25 x 5400mm	Charcoal
TI-1588	Decking	90 x 25 x 5400mm	Forest Red
TI-1589	Decking	90 x 25 x 5400mm	Mocca
TI-1593	Decking	140 x 25 x 3610mm	Mocca
TI-1464	Decking	140 x 25 x 5400mm	Charcoal
TI-1465	Decking	140 x 25 x 5400mm	Mocca
TI-1466	Decking	140 x 25 x 5400mm	Forest Red
TI-1559	Decking	140 x 25 x 5400mm	Grey

### ALTERNATIVE DECKING OPTIONS

Code	Item	Size	Colour
TI-1560	Tile	310 x 310 x 22mm	Charcoal
TI-1561	Tile	310 x 310 x 22mm	Forest Red
TI-1562	Tile	310 x 310 x 22mm	Mocca
TI-1563	Tile	610 x 310 x 22mm	Charcoal
TI-1564	Tile	610 x 310 x 22mm	Forest Red
TI-1565	Tile	610 x 310 x 22mm	Mocca
TI-1566	Tile	910 x 310 x 22mm	Charcoal
TI-1567	Tile	910 x 310 x 22mm	Forest Red
TI-1568	Tile	910 x 310 x 22mm	Mocca
TI-1569	Tile End	310 x 75 x 22mm	Mocca
TI-1570	Tile End	610 x 75 x 22mm	Mocca
TI-1571	Tile End	910 x 75 x 22mm	Mocca
TI-1572	Deck Cover	40 x 36 x 5400mm	Charcoal
TI-1573	Deck Cover	40 x 36 x 5400mm	Forest Red
TI-1574	Deck Cover	40 x 36 x 5400mm	Mocca
TI-1575	Deck Cover	55 x 10 x 5400mm	Charcoal
TI-1576	Deck Cover	55 x 10 x 5400mm	Forest Red
TI-1577	Deck Cover	55 x 10 x 5400mm	Mocca
TI-1578	Tile End	310 x 75 x 22mm	Charcoal
TI-1579	Tile End	310 x 75 x 22mm	Forest Red
TI-1580	Tile End	610 x 75 x 22mm	Charcoal
TI-1581	Tile End	610 x 75 x 22mm	Forest Red
TI-1582	Tile End	910 x 75 x 22mm	Charcoal
TI-1583	Tile End	910 x 75 x 22mm	Forest Red

## WE'VE GOT DECKING How To.

Talk to our patio experts to sort out your outdoor living needs. Everything you need to know to is in our head.

Just tell us what's in yours and we'll make it happen



« SCAN THIS QR CODE TO FIND A STRATCO NEAR YOU

**1300 155 155**  
**stratco.com.au**

All brands and logos/images accompanied by © or ™ are trade marks of Stratco (Australia) Pty Limited. © Copyright June 2015

**How To.**

